

**BOARD OF COUNTY COMMISSIONERS
COUNTY OF HINSDALE, STATE OF COLORADO**

**RESOLUTION NO. 16
SERIES 2024**

**A RESOLUTION SETTING THE SPEED LIMITS ON PORTIONS OF HINSDALE
COUNTY ROAD 30**

WHEREAS, Colo. Rev. Stat. § 42-4-1101(7), authorizes counties to alter speed limits on roads within their jurisdiction;

WHEREAS, the portion of Hinsdale County Road 30 ("CR 30") just past, or west, of the inlet of Lake San Cristobal to Child's Park (approximately Mile Marker 4) as shown on the map attached hereto as Exhibit A and incorporated herein by this reference, includes approximately 4 miles of roadway; and

WHEREAS, the portion of CR 30 from Child's Park to the County Line (Cinnamon Peak Summit), as shown on the map attached hereto as Exhibit B and incorporated herein by this reference, includes approximately 11 miles of roadway; and

WHEREAS, speed limits on the portion of CR 30 described above have previously been set by the Hinsdale County Board of County Commissioners ("Board") at 20 miles per hour; and

WHEREAS, the Board believes the speed limit of 35 miles per hour is more appropriate for the portion of CR 30 from the inlet of Lake San Cristobal to Child's Park, and the speed limit of 25 miles per hour is more appropriate for the portion of CR 30 from Child's Park to the County Line.

NOW THEREFORE, BE IT RESOLVED by the Board of County Commissioners of Hinsdale County, Colorado, as follows:

1. The speed limit shall be 35 miles per hour on the portion of Hinsdale County Road 30 just past, or west, of the inlet of Lake San Cristobal to Child's Park (approximately mile marker 4) and the speed limit shall be 25 miles per hour on the portion of CR 30 from Child's Park to the County Line (Cinnamon Peak Summit), as shown on the maps attached hereto as Exhibit A and Exhibit B and incorporated herein by this reference, and which together includes approximately 15 miles of roadway.
2. This Resolution shall rescind and replace any former resolutions setting a speed limit on said portion of Hinsdale County Road 30 that conflicts with the speed limit set hereby.

INTRODUCED by Commissioner Robert Hurd, seconded by
Commissioner Greg Levine and passed this 7th day of June 2024.

**BOARD OF COUNTY COMMISSIONERS
OF HINSDALE COUNTY, COLORADO**

By:

Kristine Borchers
Kristine Borchers, Chair

ATTEST:

Joan Roberts

Joan Roberts, County Clerk

By Amsen Almy Deputy Clerk



EXHIBIT A

CR 30 – Lake inlet to Child's Park
35 miles per hour

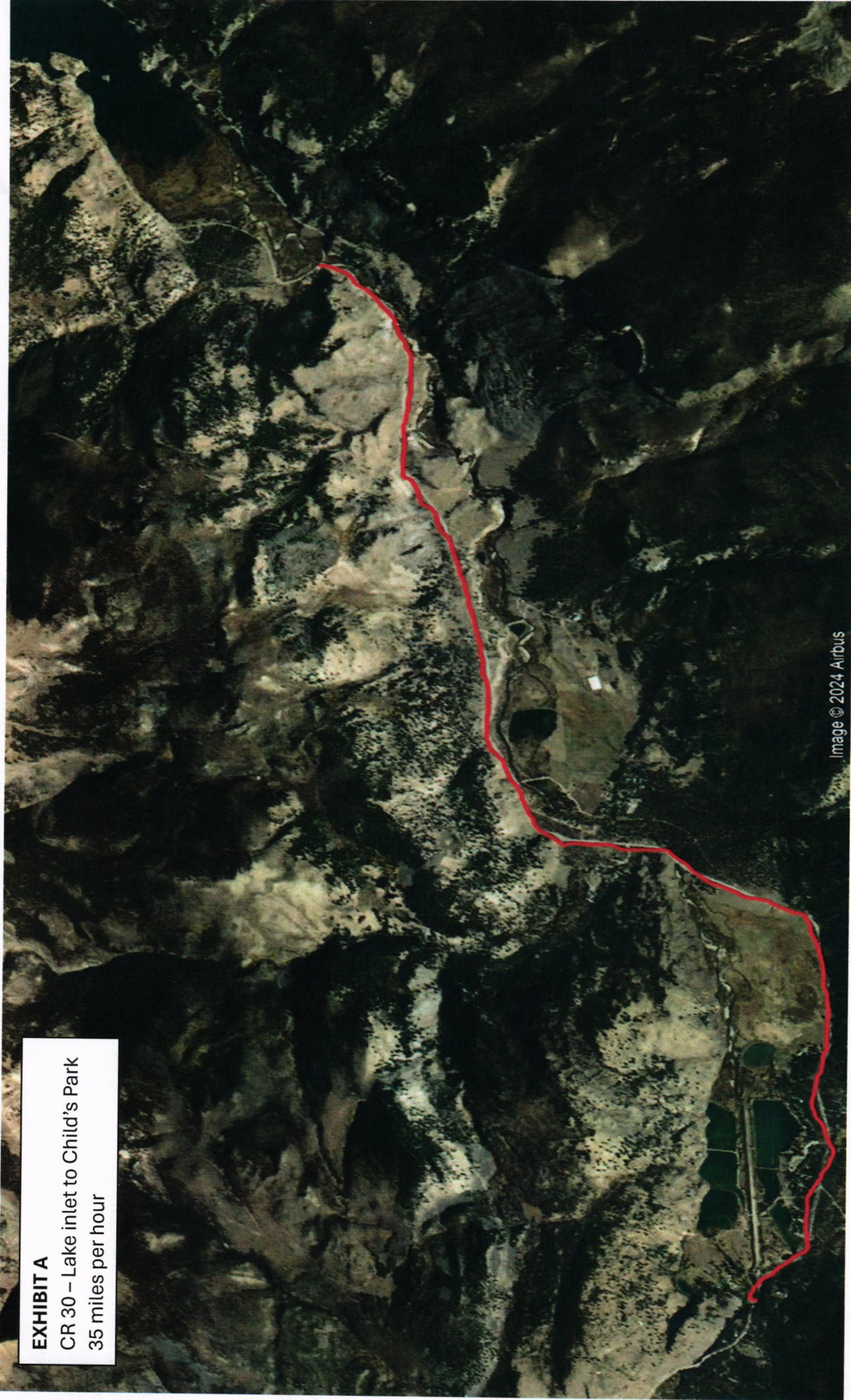


Image © 2024 Airbus

EXHIBIT B

-Hinsdale County Road 30 – Child's park
to County Line (Cinnamon Summit)
-25 miles per hour

